



COMPANY PROFILE

LOGISTICS PARTNER OF CHOICE



At RLC, we are always on the lookout for better solutions in our dynamic industry that meets our clients unarticulated needs and existing market trends.



01

—

Contents



Contents

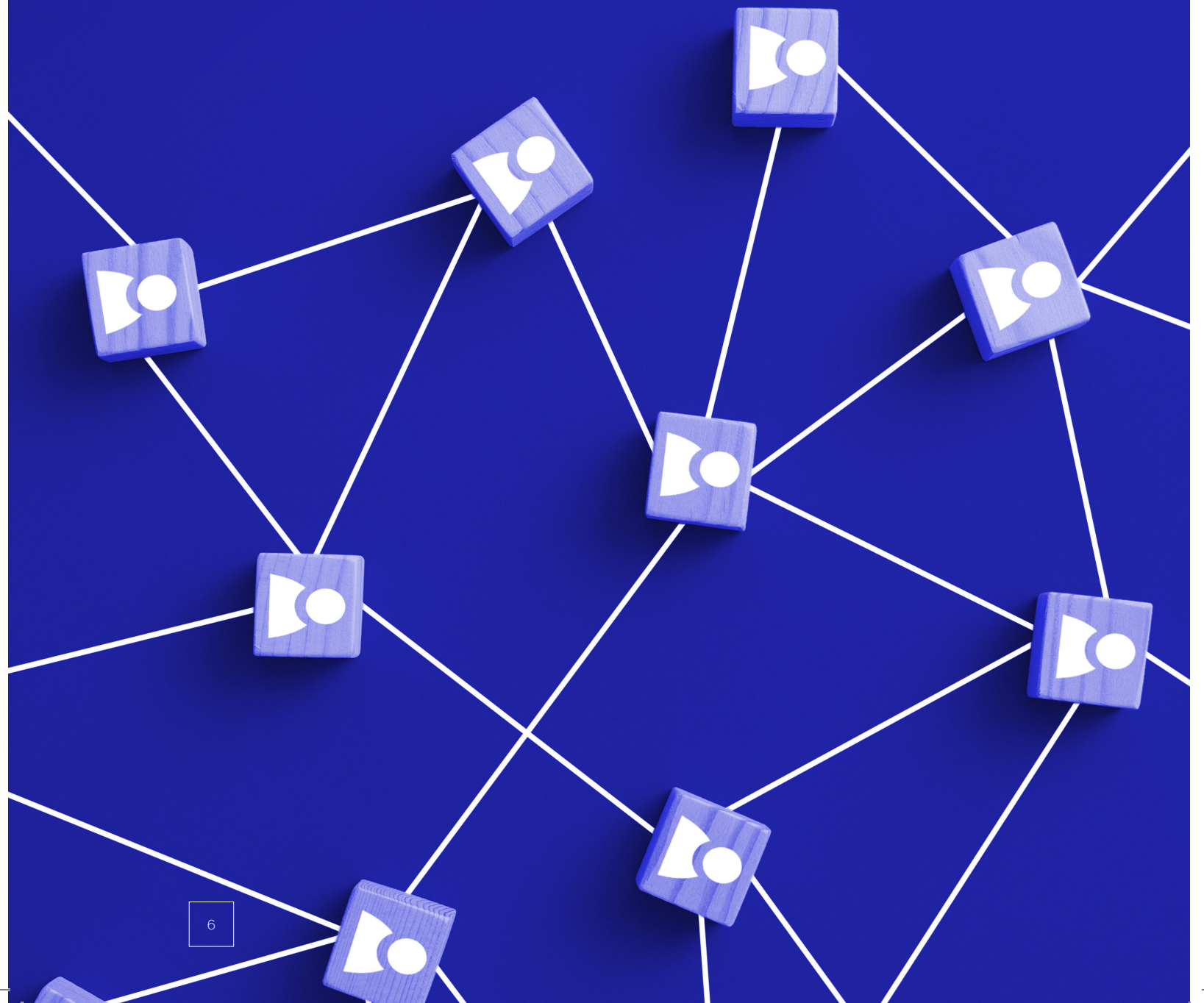
About Us	7
Our Philosophies	9
Leadership Statement	11
Our Management Team	13
Our Milestones	15
Our Services	17
Our Solutions	19
Some of our Clients	27

We perform with unyielding commitment to integrity, respect, customer focus and innovation.

02



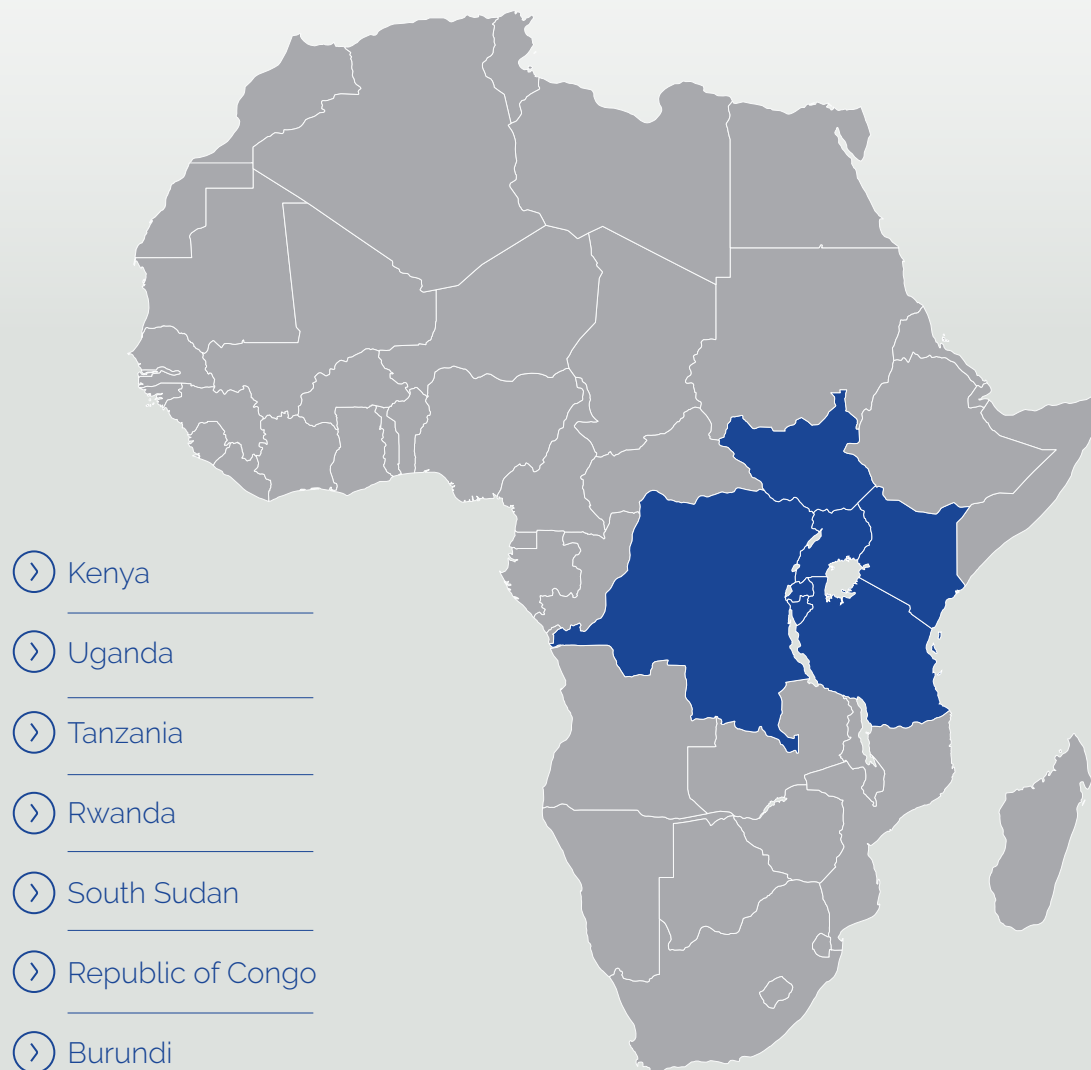
About Us



About Us

Regional Logistics Center Ltd. was established in the year 2003 and registered under Companies Act (Cap. 486) of the Laws of Kenya and has operated successfully at the port of Mombasa since inception, providing services in **cargo handling** and **logistics** for **Kenya** and the **East and Central African countries** among them Uganda, Tanzania, Rwanda, South Sudan, Republic of Congo and Burundi.

With our existing infrastructure, owned assets and cutting edge Supply Chain Suite, we are equipped as one of the **largest one-stop logistics service** providers with a strong ability to serve various industry verticals. Supported by a team of experts, we strive to provide the best in logistics services for our customers, so as to support their businesses and assist in gaining competitive advantage by streamlining their logistics requirements.



03

—

Our Philosophies



Our Philosophies



Our Vision

The Preferred Partner in Cargo Logistics Services.



Our Mission

To Revolutionize The Cargo Logistics Experience and Create Value For All.

Our Values

We strive to perform with unyielding commitment to integrity, respect, customer focus and innovation.



INTEGRITY

under all circumstances, we do the right thing.



CUSTOMER FOCUS

we recognize that our customers are the reason for our success in business and we are committed to listen and respond positively to their needs.



RESPECT

this is our first gift at all times regardless of the circumstances.



INNOVATION

At RLC, we are always on the lookout for better solutions in this dynamic industry that meets our clients unarticulated needs or existing market trends.

04

—

Leadership Statement

Leadership Statement



Moses Omollo
General Manager

(BA, MBA, PhD) is a master of his profession, a leader full of unique and innovative solutions with over two decades of experience.

Regional Logistics Centre Ltd has continued to ensure that service delivery in our core activity areas remain **professional, competent, efficient** and **client focused**. Over the years, Regional Logistics has strived to excel in the chosen service areas that include FCL/LCL Handling, Motor Vehicle Handling, Loose Cargo Handling, Project Cargo Handling, Freight Forwarding & Consolidation to mention a few. We strive to deliver operational excellence and performance with unyielding commitment to integrity, respect, customer focus and innovation.

Regional Logistics rapid growth and ever growing presence within the Eastern Africa region is underpinned by the emphasis we put on serving our clients.

Together we are dedicated individually and collectively by not only meeting but exceeding clients' expectations. We engineer our business to tailor and suit what our clients require.

Basically, whatever we promise, we deliver! With our team of dedicated and competent staff, Regional Logistics invites you to be part of our ever growing client base and in doing so experience service delivery that is tailored to suit your needs.

I assure you of our long term commitment to delivering an elevated partner experience. This is our promise.

05

—

Our Management Team



Our Management Team

We are about Integrity, Respect, Customer Focus and Innovation.

Whatever we promise, We Deliver!



Moses Omollo
General Manager

(BA, MBA, PHD)
is a master of his profession, full of unique and innovative solutions with over two decades of experience.



Felix Kikanga
Head of Finance

(MBA), (BBM), (CPA-K), (CCP-K)
A distinguished finance professional with extensive experience gained over the past 15 years from various organisations in different industries.



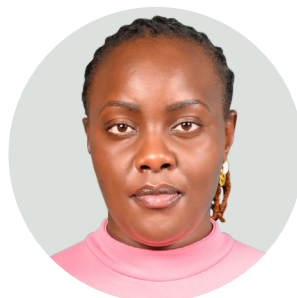
Zebedeo Osoro
Head of Operations

(BBM, MICS)
is an expert with over 20 years of experience in operations management.



Maryam Mohammed
Head of Commercial

(BA, MBA)
Self-driven and results oriented with 3 decades of experience in Shipping, Logistics & Supply Chain Management in the dynamic industry.



Agnes Moipei
Head of HR & Admin

An accomplished Human Resource and Administration Professional with over six years of experience working with International Stakeholders, Governments and Corporate Organizations.



Julius Kauna
Head of Security

An accomplished Security practitioner with a vast experience spanning more than 20 years in Commercial Security, Asset Protection and Security Surveillance Systems.

06

—

Our Milestones



Our Milestones

Having been established sixteen years ago, Regional Logistics Centre has the best staff, unrivalled wealth of experience and excellent machinery all geared towards our client satisfaction.

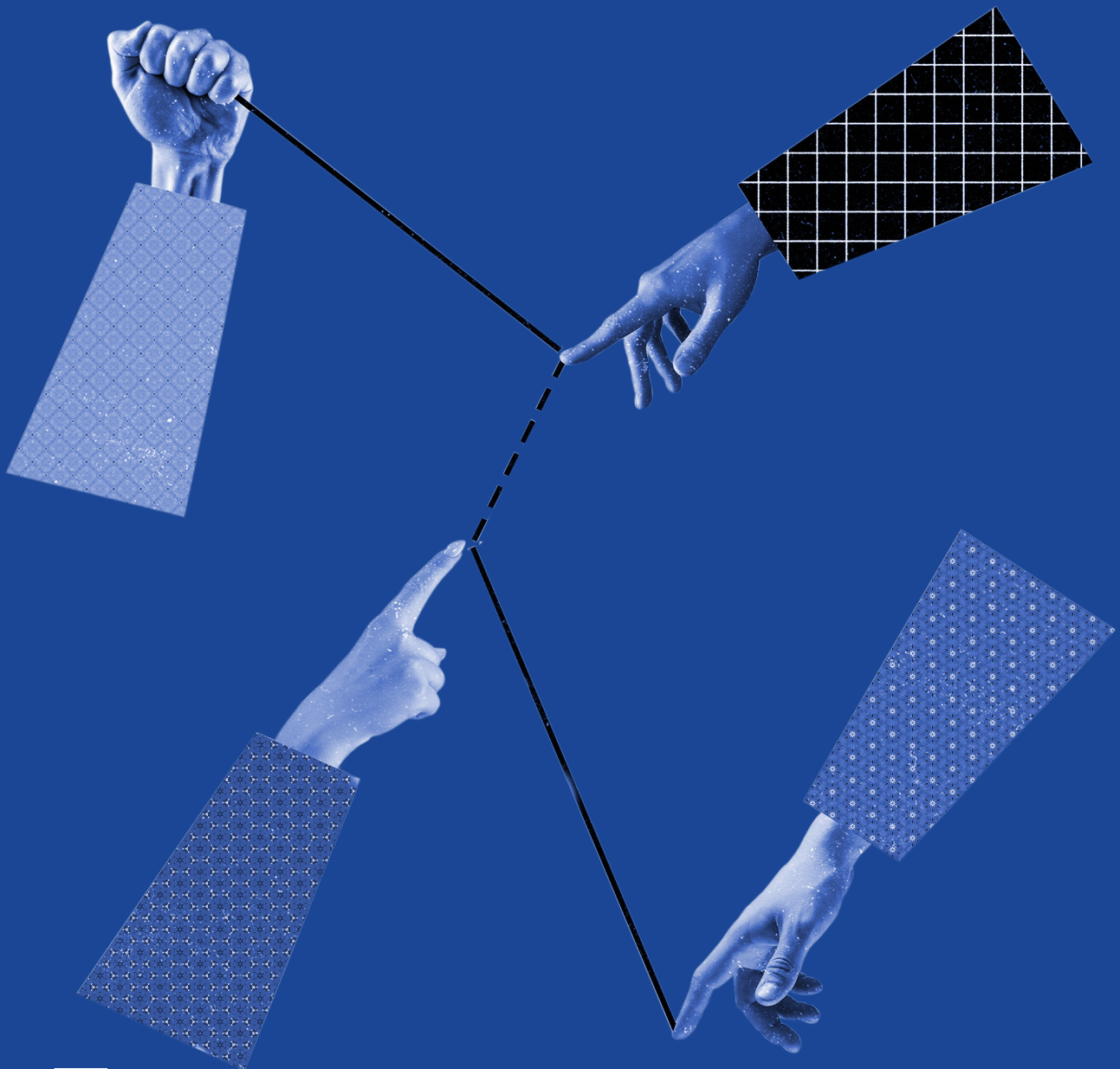
We always strive to provide the best-in-class services to our clients so as to support their businesses and assist them in gaining competitive advantages by streamlining their logistics requirements.



07



Our Services



Our Services

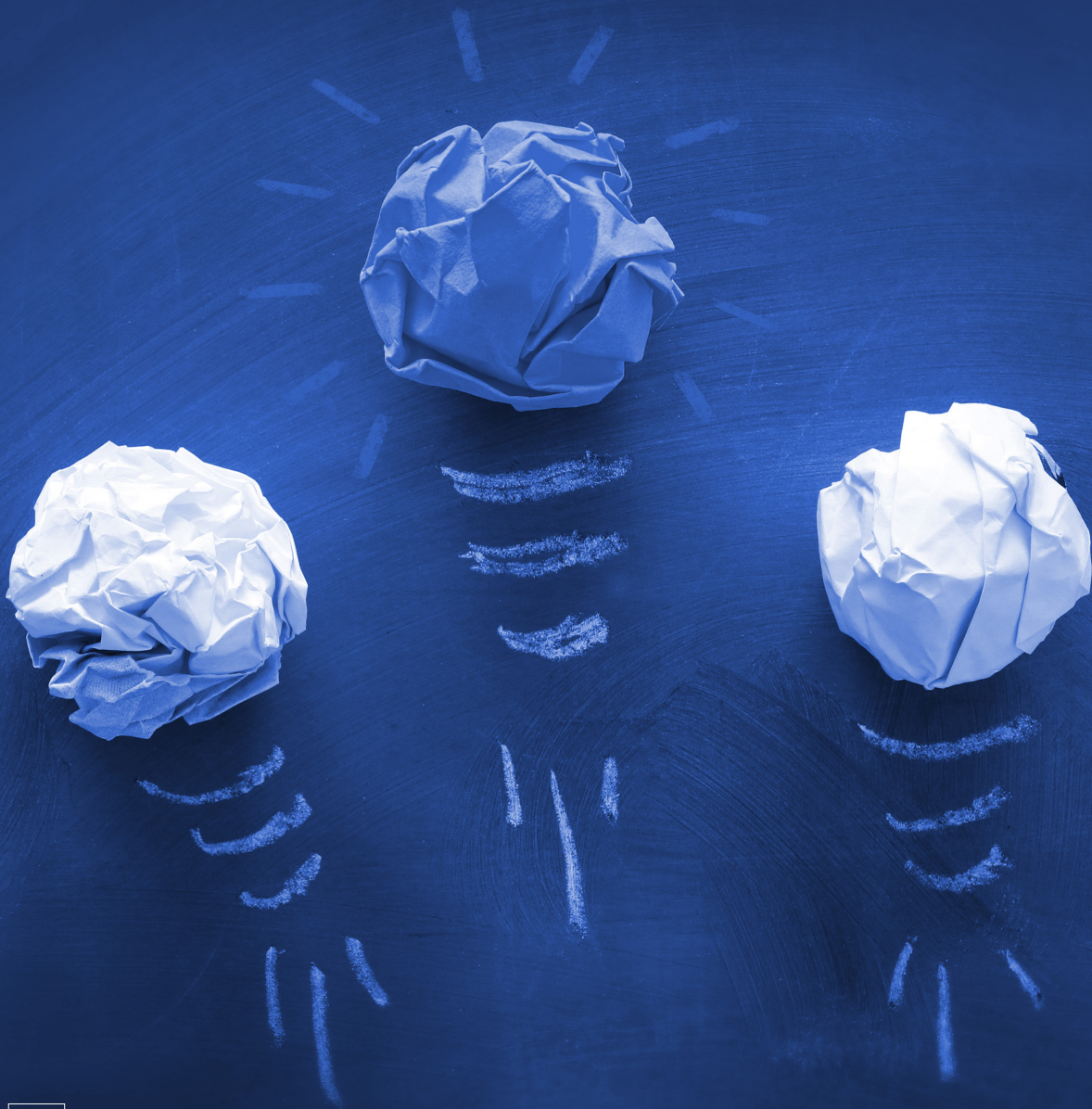
- › FCL Handling (Import & Export)
- › LCL Handling (De-consolidation/Stripping)
- › Motor Vehicle (Local & Transit)
- › Freight Forwarding & Consolidation
- › Export Container Handling
- › Project Cargo
- › Loose Cargo
- › Bulk Cargo
- › Customs Brokerage



08



Our Solutions



Our Solutions

With our existing infrastructure, owned assets and cutting edge Supply Chain Suite, we are one of the largest one- stop logistics service providers, with the ability to serve various industry verticals.

- RT- Regional Terminals (product line of CFS)
- RWSC- Regional Warehousing and Supply Chain (product line of free warehousing and supply chain services.)
- RCFF- Regional Consolidation and Freight Forwarding (product line of consolidation cargo and freight forwarding for both Sea & Air Freight.



PORT OPERATIONS

Regional Logistics Centre Limited has an operation office located inside the port of Mombasa. The office referred to as BP3 provides cargo logistics services for consignments handled within the port. The BP3 has operated successfully inside the port of Mombasa since the year 2003 providing services in cargo handling.

SERVICES

- › Motor Vehicle Handling on direct delivery basis. This involves receiving of motor vehicles at the ship's ramp, inspecting the vehicles at the ramp to determine status, transfer of vehicles under escort security, and holding the vehicles under escort security, and holding the vehicles inside the shed to await clearance by consignee appointed clearing agents.

- › Warehousing of bulk cargo and loose cargo inside the shed.

- › Handling of heavy machinery, including project cargo.





PROJECT CARGO

Our team of project logistics experts handle consignments of various dimensions and complexity that require specialized lifting equipment. The team directly handles over a million metric tonnes of project logistics consignments using special equipment and chartering services.

SERVICES

- › Regional and global project logistics alliances of specialists for moving in remote sites and tough terrain.

- › Standard or controlled storage and lay-down services including special handling.

- › Project logistics management services for a wide range of industries, including construction, mining, power, oil and gas and chemical industries.

- › Project management, down to the smallest details of your project. Exceptional attention to all regulatory compliance issues, safe operations, and the protection of the environment.

- › Subject matter experts to ensure excellent planning and fine tuning of scope of work during pre and post –project period.



OPEN YARD STORAGE

Limitless Capacity, Strategically Located. The CFS is strategically located in Martini along the Mombasa- Nairobi highway at the Coast and away from traffic congestion roads. Due to this ideal location that is adjacent to the main highway, we are confident in our timely delivery and efficient services and we are also able to support consignments of various sizes for a variety of industry verticals. Our Open Yards are fully electric fenced, hard surfaced, manned by Security Personnel and under CCTV Surveillance 24/7. To ease handling of consignments entering and leaving the Open Yards, we have equipped it with heavy lifting equipment like reach stackers and heavy duty diesel forklifts with licensed and certified operators and riggers.

SERVICES

- › Steel coils.

- › Iso tanks (empty).

- › Various metal consignments.

- › Automobiles.

- › Non-temperature sensitive consignments.

- › Construction equipment and project materials.

- › Machinery and oversized consignments.



SUPPLY CHAIN SUITE

With logistics experts of vast experience, we continue to deliver **cutting edge supply chain solutions** to our customers. Our approach is simple and flexible. We offer a dedicated project team approach in which we assign a Project Manager to do a complete review and study of current systems and practises using a six sigma methodology DMAIC (Define- Measure-Analyse-Implement- Control) roadmap tool.

During the project period, your team will have unlimited access to our experts who have decades of experience in chain design and implementation of supply chain solutions.

SERVICES

- Supply chain optimization.

- Supply chain suite selection & implementation.

- Warehouse operations work flow simulations.

- Establish SOP - system & work instruction.

- Warehousing & distribution system design.

- Storage & handling system design.

- Order kitting pick pack.



CONTRACT LOGISTICS

Adaptive, Scalable Enabling Solutions. Our Contract Logistics include fully integrated services related to Warehousing, Distribution, Last Mile Delivery and Order Fulfilment. We design and deliver scalable solutions tailored to your individual business needs. We endeavour to ensure that all our clients business requirements are fulfilled, service commitments are met and most importantly, customers are satisfied. Our key strength is our ability to offer flexible and hassle free logistic solutions to ensure our consignments move seamlessly from one point to another while keeping your supply chain running smoothly and effectively.

SERVICES

- Open yard storage.

- Online order tracking.

- Inventory management & reporting.

- Last mile delivery, distribution and promotional packaging.

- Special tagging and labelling.

- Third party inspection services.

- Break bulk services of palletized and bagged cargoes.



ON-SITE LOGISTICS

Our team of on-site logistics experts are **highly flexible and exposed to various industrial verticals** offering on-site logistics either on call –off basis or on long term contractual basis.

Over the years, we have worked with clients in improving their logistics services in both their owned and outsourced sites by creating synergies between their staff, processes, technology and equipment to improve efficiency and reduce logistic cost.

SERVICES

- ⤵ Supply of material handling equipment with/without licensed operator.

- ⤵ Supply of storage service.

- ⤵ Supply of warehouse management service.

- ⤵ Supply of yard management service.

- ⤵ Supply of transport management service.

- ⤵ Supply of freight management service.

- ⤵ Stock count services.



FREIGHT FORWARDING

Creating value across collaborative trade networks. At Regional Logistics Centre Ltd, we assure you of on-time shipments and through our extensive global freight forwarding network we provide excellent service lanes and connectivity to major gateways. We give you peace of mind with our expert clearance partners who have sound local customs regulations and know – how for clearance services at major shipping gateways. Our Global Freight Network Alliance helps us in providing our clients with cost- effective and personalized support.

SERVICES

- ⤵ Land, sea and air.

- ⤵ Shipment monitoring and tracking services and shipment booking.

- ⤵ Customs clearance and insurance services (through our partners).

- ⤵ Overland transportation.

- ⤵ Bill of lading preparation (through our partners).

- ⤵ Time sensitive consignment tracking and supervision.

- ⤵ Import and export documentation preparation (through our partners).

- ⤵ High value consignment tracking and supervision.

Some of Our Clients


	
	
	
	
	



Logistics Partner of Choice

MOMBASA OFFICE:

Mombasa-Nairobi Highway, Miritini P.O. Box 86317 - 80100 Mombasa
Tel: +254 791 478 547 / +254 773 839 902 / +254 732 839 906

 +(254) 713 939 989

 sales@rlc.co.ke

 www.rlc.co.ke

